

# MONTHLY MEMBERSHIP PROGRESS REPORT

LOCATION WISCONSIN

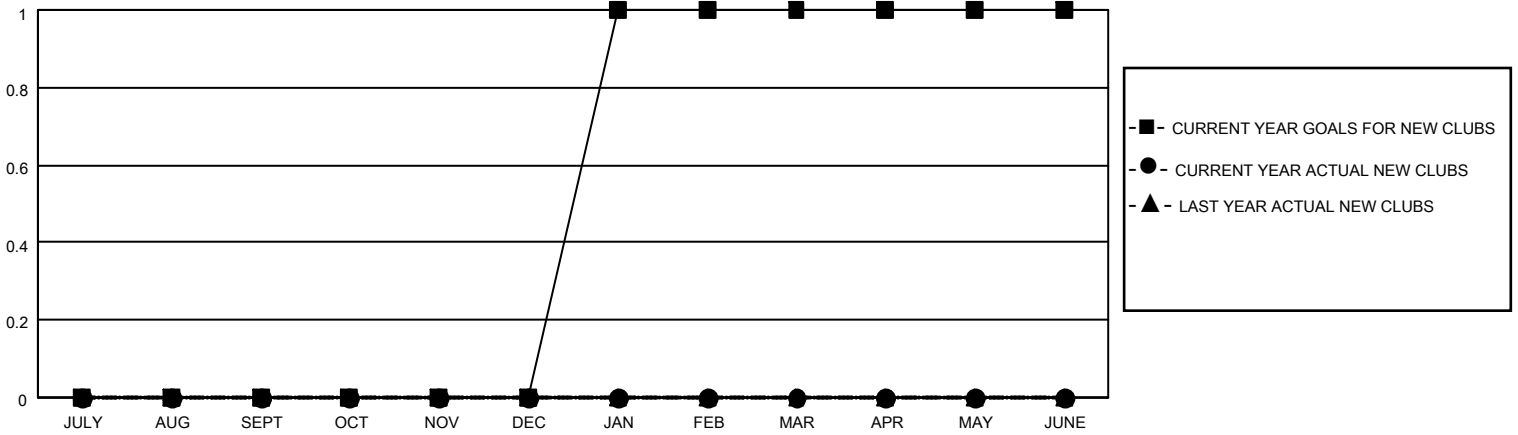
District 27 D2

Results as of: 1/31/2021

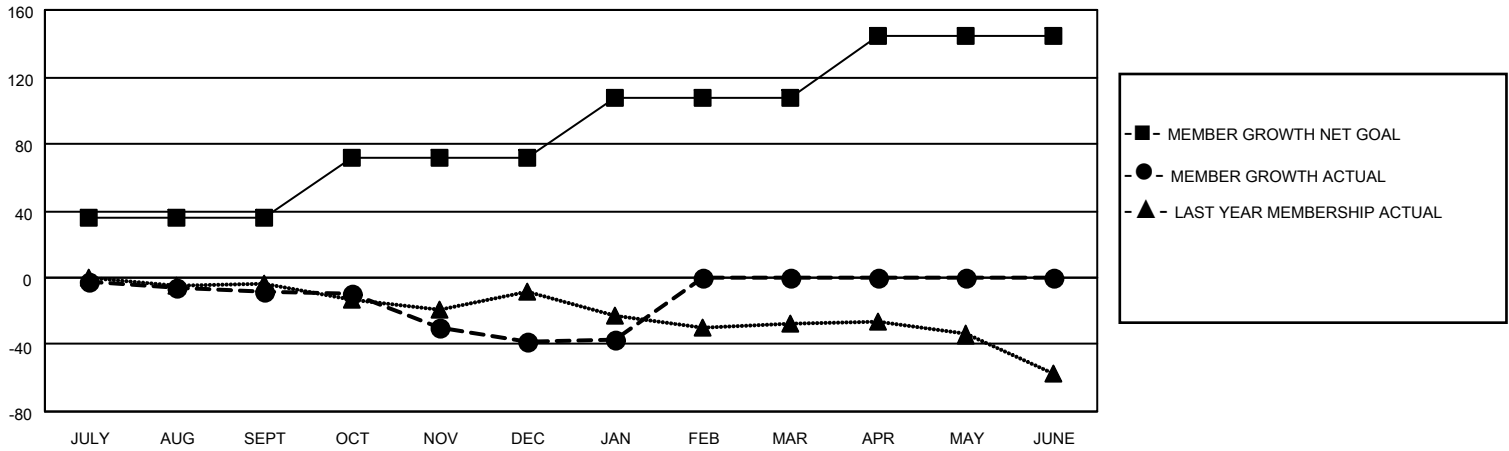
| Clubs                 |               |           |               |
|-----------------------|---------------|-----------|---------------|
| RESULTS FOR 2020-2021 |               |           |               |
| QUARTER               | NEW CLUB GOAL | NEW CLUBS | DROPPED CLUBS |
| JULY/AUG/SEPT         | 0             | 0         | 0             |
| OCT/NOV/DEC           | 0             | 0         | 0             |
| JAN/FEB/MAR           | 1             | 0         | 0             |
| APR/MAY/JUNE          | 0             | 0         | 0             |

| Members               |                        |                      |   |
|-----------------------|------------------------|----------------------|---|
| RESULTS FOR 2020-2021 |                        |                      |   |
| QUARTER               | MEMBER GROWTH NET GOAL | MEMBER GROWTH ACTUAL | DROPPED MEMBERS ACTUAL<br>(including transfers) |
| JULY/AUG/SEPT         | 36                     | 35                   | 42  |
| OCT/NOV/DEC           | 36                     | 18                   | 46  |
| JAN/FEB/MAR           | 36                     | 12                   | 11  |
| APR/MAY/JUNE          | 36                     | 0                    | 0   |

**GOALS AND ACTUAL NEW CLUBS CUMULATIVE**



**GOALS AND ACTUAL MEMBERS CUMULATIVE**



|                        |   |                                     |
|------------------------|---|-------------------------------------|
| DROPPED CLUBS: 0       | 24 CLUBS OF 48 ADDED 1 OR MORE NEW MEMBERS                | <u>GENDER DISTRIBUTION</u>          |
| <u>DROPPED MEMBERS</u> | <a href="#">CLICK HERE FOR CUMULATIVE MEMBERSHIP DATA</a> | MALE 1,121 (73.12%)                 |
| DECEASED 13            |   | FEMALE 412 (26.88%)                 |
| CLUB CANCELLED 0       |   | TOTAL FAMILY UNIT MEMBERS 341       |
| OTHER 86               |   | FAMILY MEMBERS PAYING HALF DUES 175 |
| <b>TOTAL 99</b>        |   |                                     |